

# BLACKMER HYDRAULIC MOTOR ADAPTER KITS INSTALLATION AND MAINTENANCE INSTRUCTIONS WITH PART LIST

961824  
INSTRUCTIONS NO. 206-E00

Section	206
Effective	March 2003
Replaces	September 2002



### This is a SAFETY ALERT SYMBOL.

When you see this symbol on the product, or in the manual, look for one of the following signal words and be alert to the potential for personal injury, death or major property damage



Warns of hazards that **WILL** cause serious personal injury, death or major property damage.



Warns of hazards that **CAN** cause serious personal injury, death or major property damage.



Warns of hazards that **CAN** cause personal injury or property damage.

### NOTICE:

Indicates special instructions which are very important and must be followed.

### WARNING



Hazardous machinery can cause serious personal injury or property damage.

**FAILURE TO SET THE VEHICLE EMERGENCY BRAKE AND CHOCK WHEELS BEFORE PERFORMING SERVICE CAN CAUSE SEVERE PERSONAL INJURY OR PROPERTY DAMAGE.**

### WARNING



Hazardous pressure can cause serious personal injury or property damage.

**FAILURE TO RELIEVE SYSTEM PRESSURE PRIOR TO PERFORMING PUMP SERVICE OR MAINTENANCE CAN CAUSE SERIOUS PERSONAL INJURY OR PROPERTY DAMAGE.**

### WARNING



Hazardous machinery can cause serious personal injury.

**FAILURE TO DISCONNECT AND LOCKOUT ELECTRICAL POWER OR ENGINE DRIVE BEFORE ATTEMPTING MAINTENANCE CAN CAUSE SEVERE PERSONAL INJURY OR DEATH.**

### NOTICE:

Blackmer pumps **MUST** only be installed in systems, which have been designed by qualified engineering personnel. The system **MUST** conform to all applicable local and national regulations and safety standards.

These instructions are intended to assist in the installation of Blackmer hydraulic motor adapters, and **MUST** be kept with the pump.

Blackmer pump service shall be performed by qualified technicians **ONLY**. Service shall conform to all applicable local and national regulations and safety standards.

Thoroughly review the pump manual, all instructions and hazard warnings, **BEFORE** performing any work on the Blackmer pump.

Maintain **ALL** system and Blackmer pump operation and hazard warning decals.

### NOTICE:

**THE APPROPRIATE BLACKMER PUMP MANUAL AND PARTS LIST MAY BE OBTAINED FROM THE BLACKMER WEBSITE (WWW.BLACKMER.COM) OR BY CONTACTING BLACKMER CUSTOMER SERVICE.**

### NOTICE:

**MAINTENANCE AND TROUBLE SHOOTING MUST BE DONE BY AN INDIVIDUAL EXPERIENCED WITH PUMP MAINTENANCE AND THE TYPE OF SYSTEM INVOLVED.**

### NOTICE:

**THE FOLLOWING INSTRUCTIONS INCLUDE ONLY THE STEPS NECESSARY TO INSTALL THE BLACKMER HYDRAULIC MOTOR ADAPTER KIT. BEFORE PROCEEDING, READ AND FOLLOW RELATED INSTRUCTIONS AND HAZARD WARNINGS PROVIDED IN THE APPROPRIATE PUMP "INSTALLATION, OPERATION AND MAINTENANCE" MANUAL.**

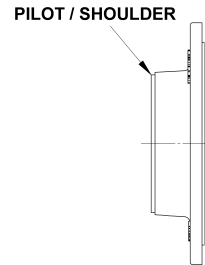
## HYDRAULIC MOTOR ADAPTER INSTALLATION

1. Remove the bearing cover (27A) and gasket (26) from the **inboard** end of the pump. Discard the gasket.
2. For Keyed Couplings:  
Apply a light coating of grease to the pump shaft, and install the coupling (34) on shaft with the shaft key aligned in the notch. Lock the coupling into place with the setscrew over the shaft key. Rotate the pump shaft until the key is on top.

For Splined Couplings:  
Apply a light coating of grease to the pump shaft, and install the coupling (34) on shaft aligning the splined coupler with the splined shaft. Push the coupler onto the shaft until it comes to a stop.

3. Install a new gasket (26A) and hydraulic motor adapter (135) on the pump head. Install capscrews (28A) through the adapter, torquing to 30-lbs. ft (40 Nm.).
4. To assure proper shaft alignment between the hydraulic motor and pump, install the hydraulic motor adapter (135) to align with the machined pilot/shoulder on the pump head. See Figure 1.

5. Grease the hydraulic motor shaft. Install the coupling key (35) in the hydraulic motor shaft and align the key with the notch in the coupling. Attach the hydraulic motor to the adapter using the adapter/motor capscrews (135A), torquing to 40-lbs. ft (54 Nm.).
  6. Apply grease in the hydraulic motor adapter through the grease fitting (76).
- Recommended Grease:**  
Exxon® RONEX MP  
Mobil® MOBILITH AW-2, or equivalent.
7. Attach hydraulic hoses to the hydraulic motor.



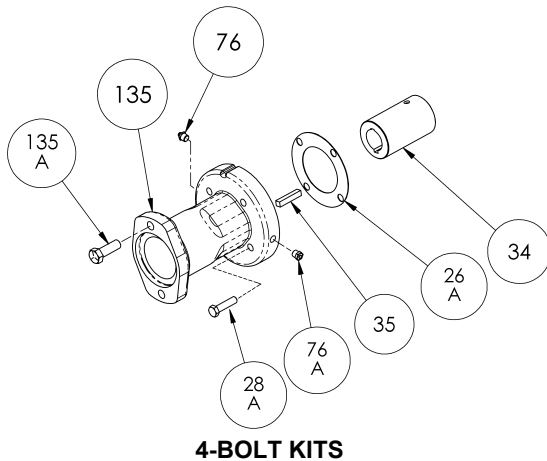
PUMP HEAD - SIDE VIEW

Figure 1

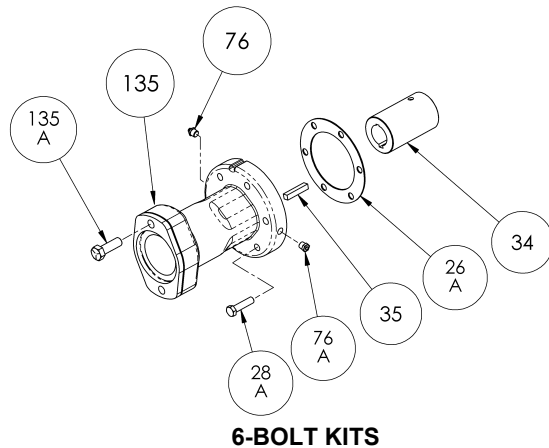
### HYDRAULIC MOTOR ADAPTER PARTS

Ref. No.	Part Name	Parts Per Pump
26A	Gasket- Hydraulic Motor Adapter	1
28A	Capscrew – Hydraulic Motor Adapter / Head	4 / 6
34	Coupling w/ Setscrew	1
35	Key – Coupling	1
76	Grease Fitting	1
76A	Grease Relief Fitting	1
135	Hydraulic Motor Adapter	1
135A	Capscrew – Adapter / Motor	2

PUMP MODELS	KIT NO.
<b>4-BOLT KITS</b>	
TX 1.5	891205
LGLD2E, CRL2	894425
TXD2A, TXD2.5A, TXV2.5B, TLGLF3C	891458
TXH3A	894426
<b>6-BOLT KITS</b>	
STX3	892228
LGLD3E, CRL3, TXD3E, TXV3B	895140
LGLD4A, CRL4, TLGLF4A	892037
TX206A (STD SHAFT)	895141
TX206A (SPLINED SHAFT)	895142



4-BOLT KITS



6-BOLT KITS