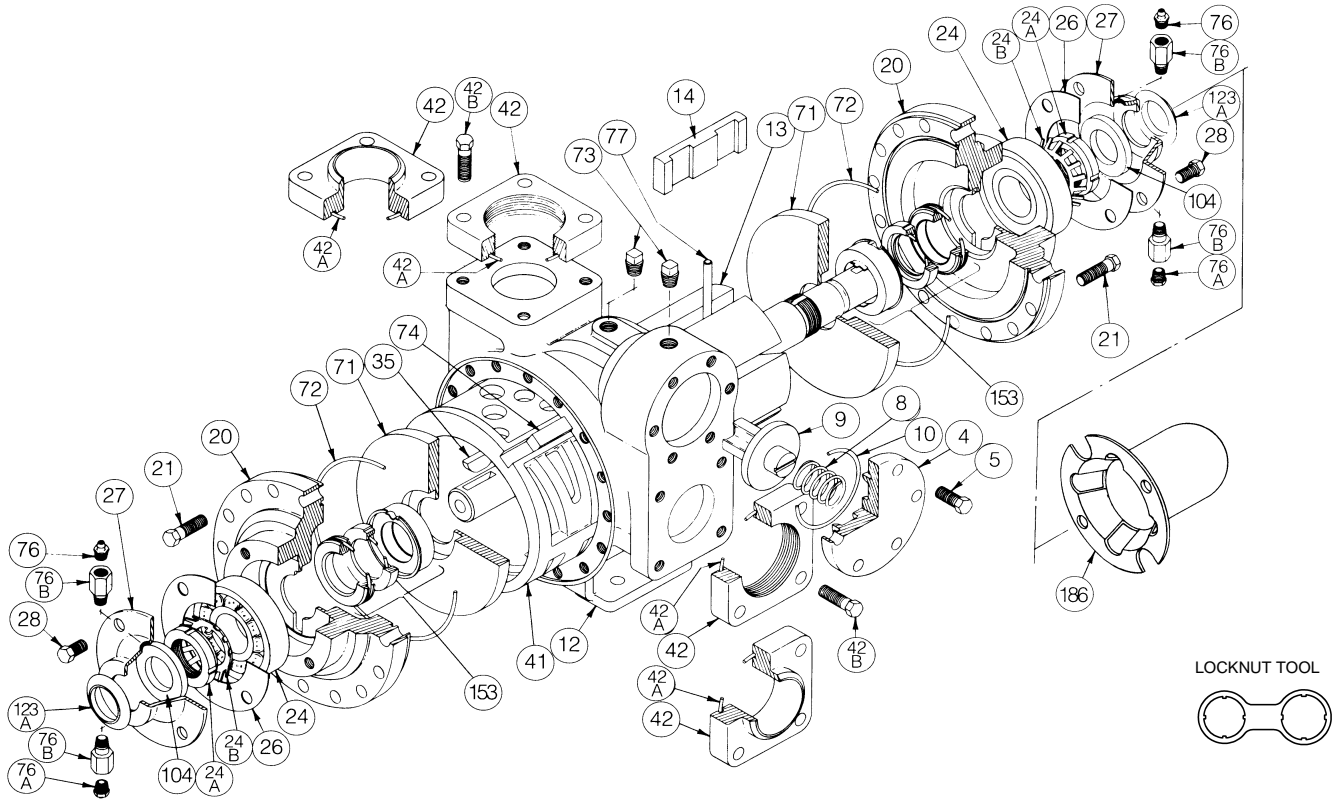


BLACKMER PARTS LIST

PUMP MODELS: CRL2, CRL3 OBSOLETE MODELS: TCRL2, TCRL3

(See Instructions 701-B00 or 785/E for Installation, Operation and Maintenance)

Section 701
Effective July 2002
Replaces June 2002



Ref. No.	Description	Parts per Pump	Size 2 Part No.	Size 3 Part No.	Ref. No.	Description	Parts per Pump	Size 2 Part No.	Size 3 Part No.
4	Relief Valve (R/V) Cover	1	414401	415113	42	Flange – NPT	2	654401	655112
5	R/V Cover Capscrews	6	920331	920331		Flange – Weld		654405	655102
8	R/V Spring (150 psi)	1	471423	475135	42A	O-Ring – Flange	2	¹ 702004	¹ 702002
9	R/V Valve	1	454405	455129	42B	Capscrew – NPT Flange	8	920384	920547
10	O-Ring – R/V Cover	1	¹ 701919	¹ 701925		Capscrew – Weld Flange		920351	920510
12	Casing	1	014405	015127	71	Disc	2	² 064412	² 065112
13	Rotor & Shaft Asy. * (Includes Ref. Nos. 24A & 24B)	1	² 264445	² 265148	72	O-Ring – Head	2	¹ 702022	¹ 702041
14	Vane – Laminate	6	¹ 091427	¹ 095109	73	Gage Plug	2	908198	908198
20	Head	2	034416	035128	74	Liner Key	1	² 183991	² 185191
21	Head Capscrews	32-40	920351	920369	76	Grease Fitting	2	317815	317815
24	Bearing	2	¹ 903156	¹ 903166	76A	Grease Relief Fitting	2	701992	701992
24A	Bearing Locknut	2	² 903521	² 903523	76B	Extension Coupling	4	701905	701905
24B	Bearing Lockwasher	2	¹ 903522	¹ 903524	77	Push Rod	3	¹ 123905	¹ 125105
26	Bearing Cover Gasket	2	¹ 383940	¹ 385125	104	Grease Seal	2	¹ 331918	¹ 331908
27	Bearing Cover	2	041431	041815	123A	Dirt Shield	2	¹ 701480	N/A
28	Bearing Cover Capscrews	8-12	920285	920285	186	Shaft Protector	1	341601	341801
35	Shaft Key	1	¹ 909130	¹ 909130		Tool - Locknut		903091	903091
41	Liner	1	² 184405	² 185111		Kit - Maintenance		898905	898906
						Kit - Rebuild		899005	899006

¹ Included in Maintenance Kit and Rebuild Kit

² Included in Rebuild Kit

*Double Ended Rotor & Shaft. **Pump models before January 1995 require PN 184407.

Keep this parts list with Installation, Operation and Maintenance Instructions.

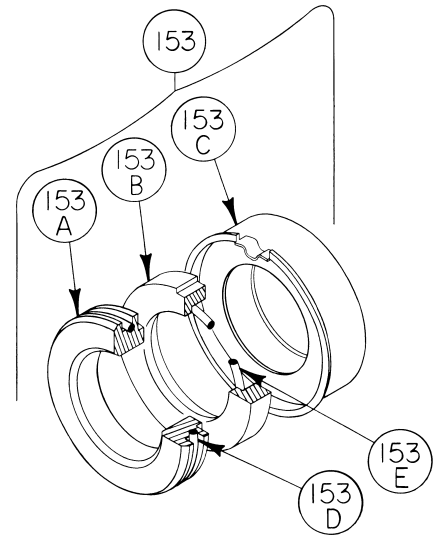
Viton and Teflon are Registered Trademarks of E.I. DuPont.

MECHANICAL SEAL

Ref. No.	Part Name	Parts Per Pump	Size 2 Part No.	Size 3 Part No.
153	Mechanical Seal Assembly (CELE)	2	¹ 334414	¹ 335132
153A*	Stationary Seat (Carbon)	2	334413	335131
153B*	Seal Face (Silicon Carbide)	2	334407	335130
153C*	Seal Jacket Assembly	2	334417	335133
153D	O-Ring – Stationary (Special-EPDM)	2	702354	702355
153E	O-Ring – Rotating (Special-EPDM)	2	702352	702353

¹ Included in Maintenance Kits and Rebuild Kits

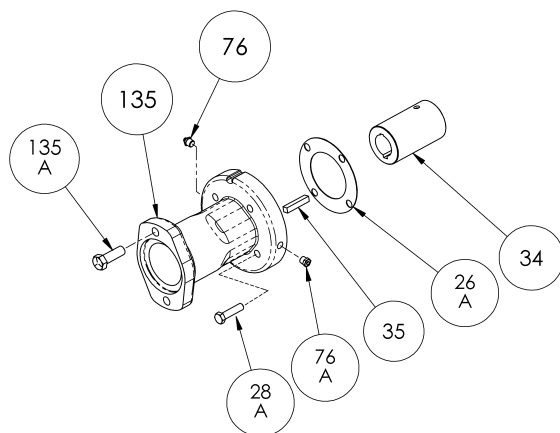
* NOTE: Mechanical Seal Asy. (Ref. No. 153) is only sold as a complete assembly. Ref. Nos. 153A/153B/153C are not available as separate replacement parts.



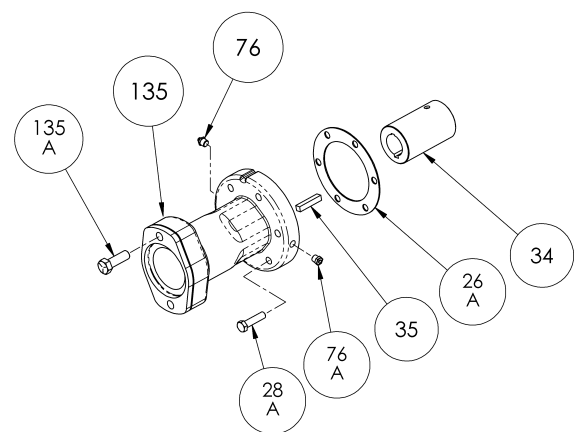
OPTIONAL HYDRAULIC MOTOR ADAPTER PARTS

Ref. No.	Part Name	Parts Per Pump	Size 2 Part No.	Size 3 Part No.
See Below	Hydraulic Motor Adapter Kit *	See Below	894425	895140
26A	Gasket- Hydraulic Motor Adapter	1	383940	381817
28A	Capscrew – Hydraulic Motor Adapter / Head	4 / 6	920369	920369
34	Coupling w/ Setscrew	1	906967	906967
35	Key – Coupling	1	909184	909184
76	Grease Fitting	1	317815	317815
76A	Grease Relief Fitting	1	701992	701992
135	Hydraulic Motor Adapter	1	041827	041831
135A	Capscrew – Adapter / Motor	2	920510	920510

* Hydraulic Motor Adapter Kits shipped prior to Spring 2002 were of a two piece design – refer to page 206-D00



CRL2



CRL3