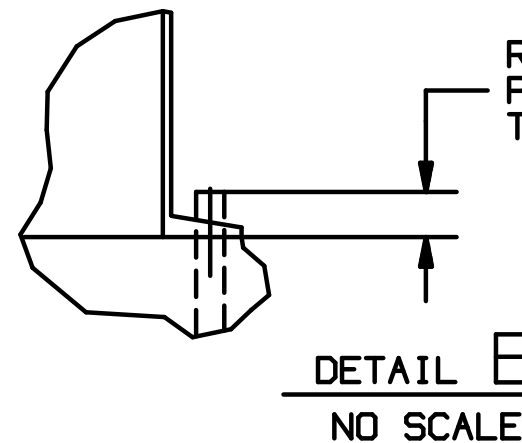
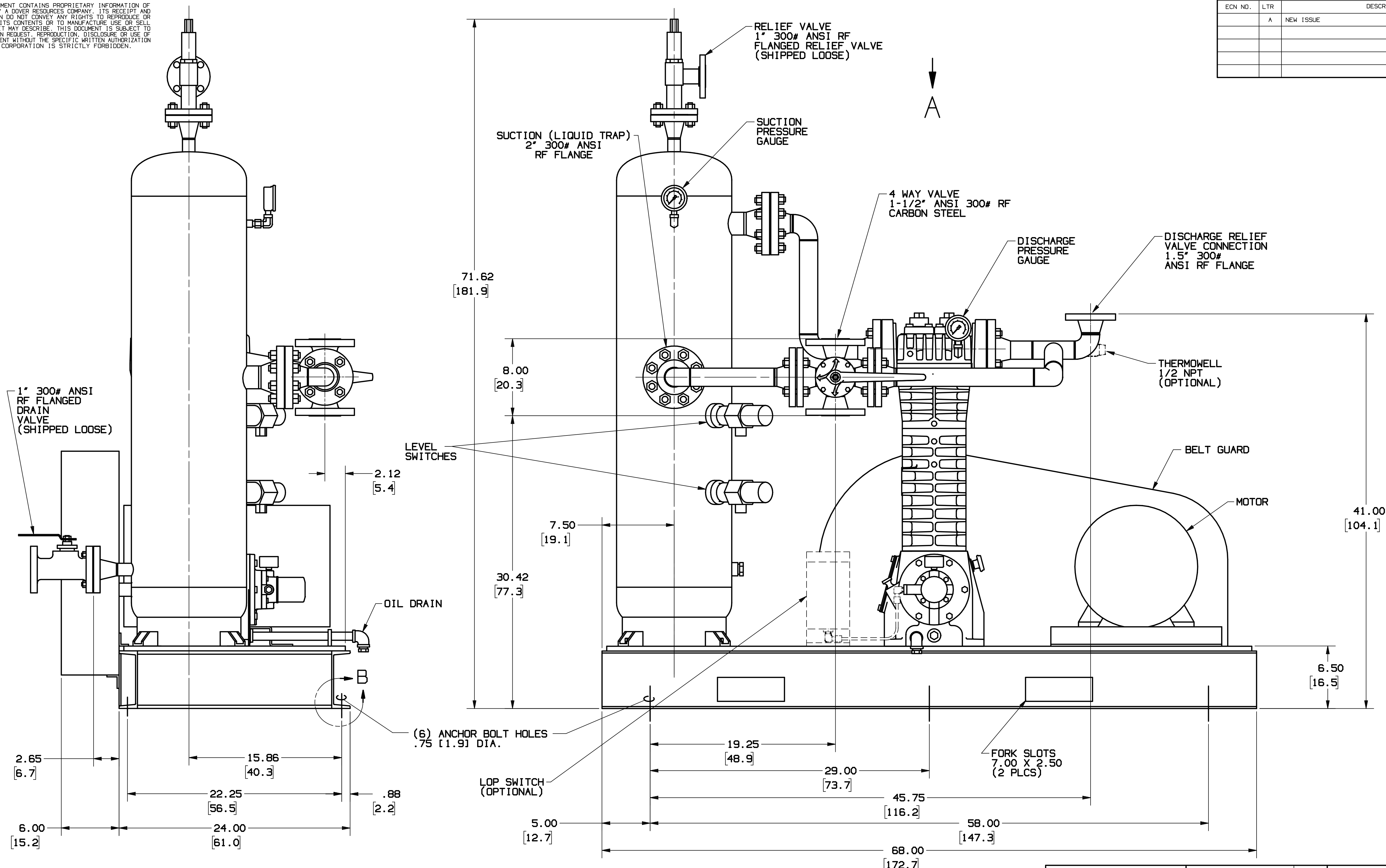


THIS DOCUMENT CONTAINS PROPRIETARY INFORMATION OF BLACKMER / A DOVER RESOURCES COMPANY. ITS RECEIPT AND POSSESSION DO NOT CONVEY ANY RIGHTS TO REPRODUCE OR DISCLOSE ITS CONTENTS OR TO MANUFACTURE USE OR SELL ANYTHING IT MAY DESCRIBE. THIS DOCUMENT IS SUBJECT TO RETURN UPON REQUEST. REPRODUCTION, DISCLOSURE OR USE OF THIS DOCUMENT WITHOUT THE SPECIFIC WRITTEN AUTHORIZATION OF DOVER CORPORATION IS STRICTLY FORBIDDEN.

REVISIONS					
ECN NO.	LTR	DESCRIPTION	DATE	DFTG	APVD.
	A	NEW ISSUE			



RECOMMENDED ANCHOR BOLT
PROJECTION 1/2" PLUS
THICKNESS OF NUT AND WASHER

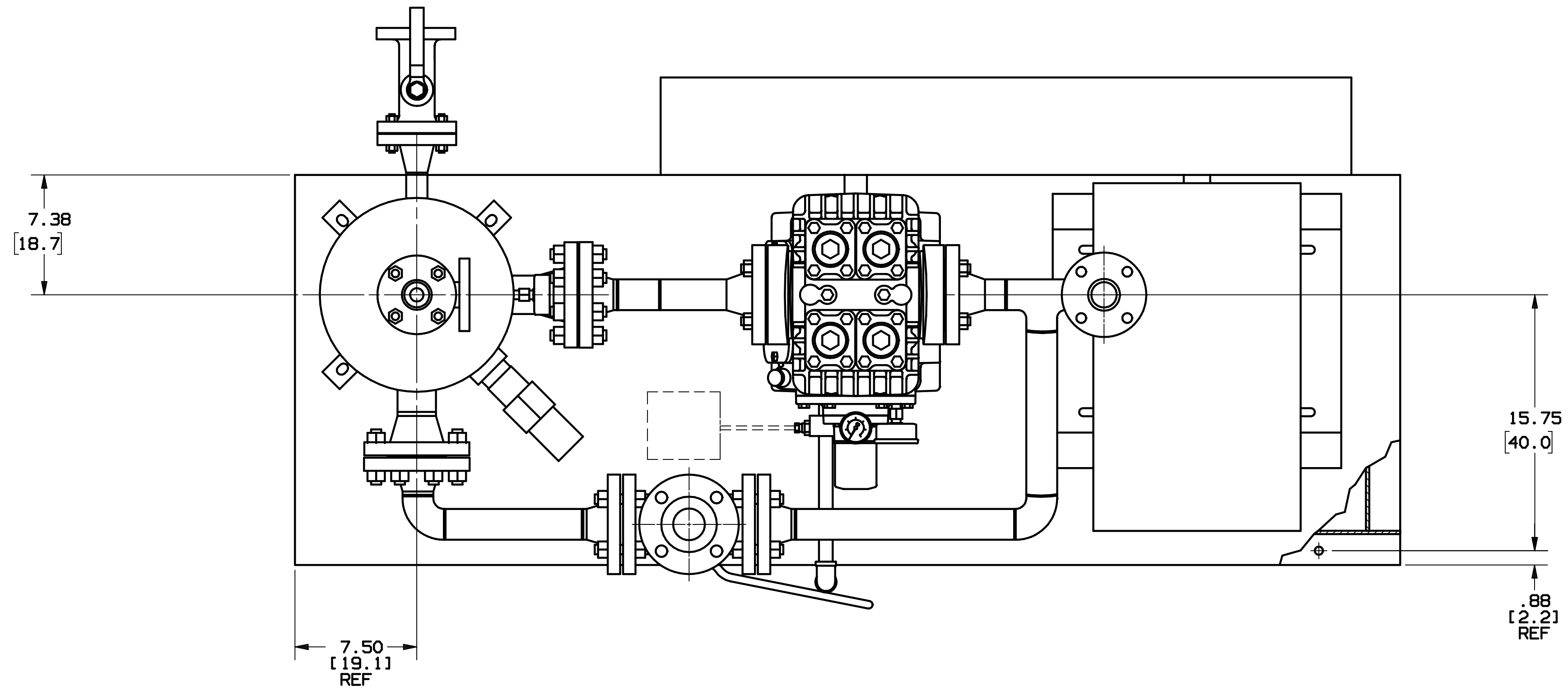
NOTE: SKID MUST BE SUPPORTED ALONG
ENTIRE LENGTH. ALL ANCHOR
BOLTS MUST BE USED FOR
GOOD INSTALLATION.

ASSEMBLY TOLERANCES:
COMPRESSOR ONLY ± .12 [3.0]
POSITIONS RELATIVE TO BASEPLATE ± .25 [6.3]


UNLESS OTHERWISE SPECIFIED		CAD	 <small>1800 Century Avenue, Grand Rapids, Michigan 49508, U.S.A. (616) 241-1811 • Telex 430014 • FAX (616) 241-3752</small>			
DRAFTSMAN	R.S.	1-23-02	OUTLINE DIMENSIONS HD362C-LW			
CHECKER	R.C.	2-07-02				
PROJ. ENGR.						
SR. ENGR.						
STD. ENGR.						
ENGR. MGR.			SIZE	CODE IDENT NO.	REV.	
MATERIAL		DO NOT SCALE DRAWING	D	07524	GC1173	A
		SCALE	3/16	CAD FILE	GC1173	SHEET 1 OF 2

THIS DOCUMENT CONTAINS PROPRIETARY INFORMATION OF BLACKMER / A DOVER RESOURCES COMPANY. ITS RECEIPT AND POSSESSION DO NOT CONVEY ANY RIGHTS TO REPRODUCE OR DISCLOSE ITS CONTENTS OR TO MANUFACTURE, USE OR SELL ANYTHING IT MAY DESCRIBE. THIS DOCUMENT IS SUBJECT TO RETURN UPON REQUEST. REPRODUCTION, DISCLOSURE OR USE OF THIS DOCUMENT WITHOUT THE SPECIFIC WRITTEN AUTHORIZATION OF DOVER CORPORATION IS STRICTLY FORBIDDEN.

REVISIONS					
ECN NO.	LTR	DESCRIPTION	DATE	DFTG	APVD.



VIEW A

UNLESS OTHERWISE SPECIFIED		CAD		 RESOURCES COMPANY <small>1809 Century Avenue, Grand Rapids, Michigan 49508, U.S.A. (616) 241-1811 • Telex: 432014 • FAX: (616) 241-3752</small>					
1. DIMENSIONS ARE IN INCHES AND (CM)	DRAFTSMAN	R.S.	1-23-02	OUTLINE DIMENSIONS HD362C-LW					
2. MACHINED PART TO BE FREE OF BURRS.	CHECKER	R.C.	2-07-02						
3. RUN OUT .003 T.I.R.	PROJ. ENGR.								
4. TOLERANCE ON	SR. ENGR.								
2 PLACES DECIMALS ± .020	STD. ENGR.								
3 PLACES DECIMALS ± .010	ENGR. MGR.			MATERIAL	DO NOT SCALE DRAWING				
ANGLES ± 2°				SIZE	CODE IDENT NO.	REV.			
5. MACHINED FINISHES				D	07524	A			
				SCALE	3/16	CAD FILE	GC1173	SHEET	2 OF 2