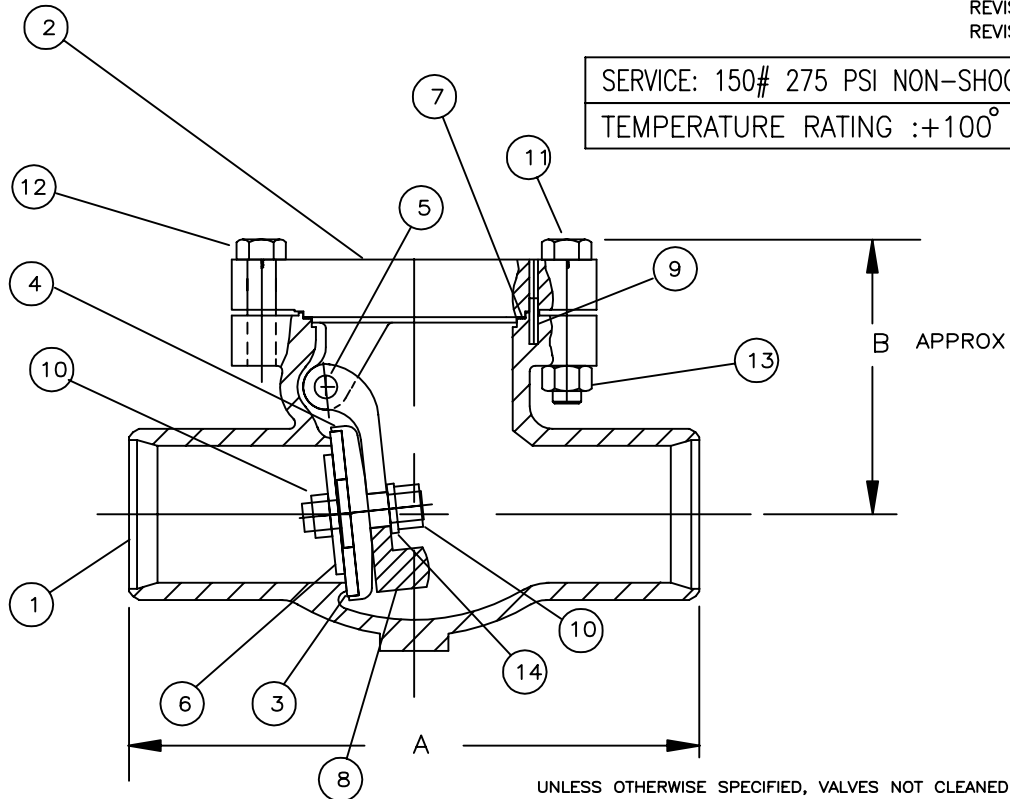


SERIES 886 ST-ST'L CRYOGENIC SWING CHECK VALVE

M-000613
RELEASED 2/2/94
REVISED 2/21/97
REVISED 2/27/02

SERVICE: 150# 275 PSI NON-SHOCK COLD
TEMPERATURE RATING : +100° F TO -325° F



UNLESS OTHERWISE SPECIFIED, VALVES NOT CLEANED FOR OXYGEN SERVICE

1	BODY	ST STL ASTM A-351 GRADE CF3M
2	CAP	ST STL ASTM A-351 GRADE CF3M
3	DISC	PCTFE
4	DISC HOLDER	ST STL ASTM A-351 GRADE CF3M
5	PIVOT PIN	NITRONIC #60
6	DISC WASHER	316L SERIES STAINLESS STEEL
7	GASKET	25% GLASS FILLED PTFE
8	ARM	ST STL ASTM A-351 GRADE CF3M
9	DOWEL PIN	300 SERIES STAINLESS STEEL
10	DISC NUT	316 SERIES STAINLESS STEEL
11	CAP BOLTS	ST ST'L ASTM A-320 GR B8 CL1
12	CAP BOLTS	ST ST'L ASTM A-320 GR B8 CL1
13	CAP NUTS	ST ST'L ASTM A-194-8
14	WASHER	316L SERIES STAINLESS STEEL

ALL INFORMATION IS SUBJECT TO LATEST REVISION

ALL DIMENSIONS ARE IN INCHES

SIZE	"A"	"B"	BW END SCH	ANSI CLASS
1-1/2"	6-1/2	3-3/4	10	150#
2"	8	4-1/8	10	150#
3"	9-1/2	5-3/4	10 & 40	150#
4"	11-1/2	8-3/8	10	150#
4"	14	8-3/8	40	150#

GODDARD VALVE CORPORATION 705 PLANTATION STREET WORCESTER, MA. 01605
 TEL: (508) 852-2435 E-MAIL: valve@goddardvalve.com FAX: (508) 852-2443